

ALTAIR® RAPIDMINER® FOR BANKING, FINANCIAL SERVICES, AND INSURANCE

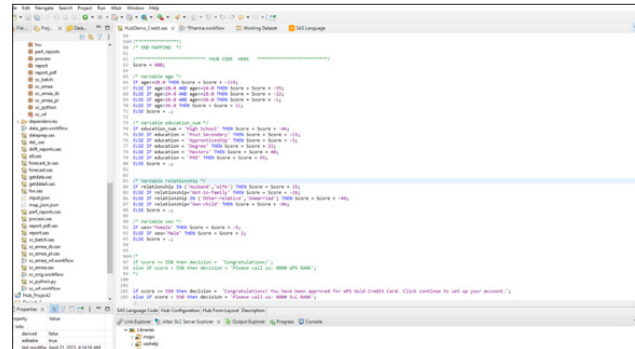
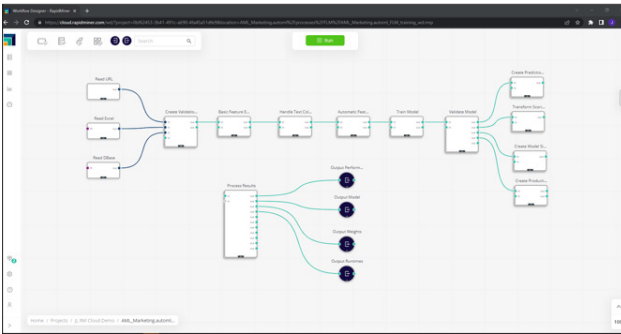
Altair works with over 4,000 banking, financial services, and insurance (BFSI) companies – including 17 of the world's top 20 investment banks. Altair RapidMiner, our data analytics and AI platform, offers unparalleled breadth and depth across the analytics lifecycle. Whether an organization requires an end-to-end platform or point solutions, Altair RapidMiner empowers customers to give their diverse teams the right tools at the right time. Our Center of Excellence (CoE) methodology provides the tools your team needs to improve their skills quickly, and our unique Altair Units licensing model provides cost-effective options that give organizations a competitive advantage.

Key Differentiators:

- Upskill business users to leverage analytics
- Code-free to code-friendly experiences
- Self-service data prep and extraction
- Native SAS language engine
- Best-in-class decision trees and scorecards
- Real-time data visualization

Common Applications in BFSI:

- Credit risk
- Fraud detection
- Marketing analytics
- Process automation
- Trade monitoring and analytics
- Reconciliation and audit
- Data visualization and dashboarding



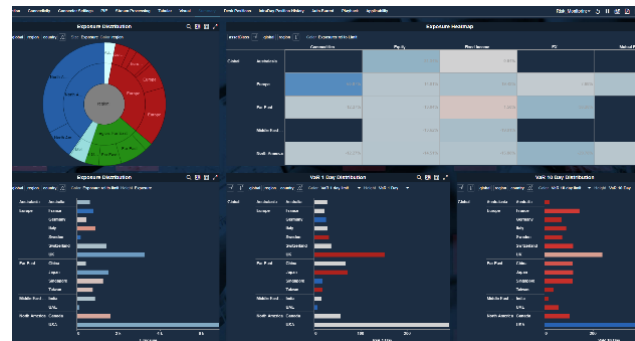
Enterprise AI

Build production-scale data and machine learning pipelines with flexible delivery options. Increase trust with interactive decision trees, model simulators, and other highly explainable features. Scale as needed from desktops to on-premises servers to secure, multi-tenant cloud implementations. [Learn more about Altair® AI Studio™, Altair® AI Hub™, and Altair® AI Cloud™.](#)

Complete Alternative SAS Language Environment

Maintain and run programs written in SAS language syntax without translation and without needing to license third-party products. Mix Python, R, and SQL with the SAS language. Modernize to the cloud, a new on-premise platform, or to a hybrid approach. [Learn more about Altair SLC™.](#)

Expense Date	Category	Amount	Currency	Expense Type
01-Jan-18	Salaries	40.95	EUR	Lunch - Employee
01-Jan-18	Salaries	21.09	EUR	Breakfast - Employee
01-Jan-18	Salaries	112.29	EUR	Telephone - Mobile
01-Jan-18	Salaries	3,262.25	EUR	Internet - Service
01-Jan-18	Salaries	61.33	EUR	Office Supplies
01-Jan-18	Salaries	37.48	EUR	Lunch - Employee



Enterprise-Class Data Transformation

Automate the acquisition and preparation of data from virtually any source to streamline your processes and increase efficiency. Extract data from reports, spreadsheets, databases, and applications then transform into the shape needed to automate labor-intensive and error-prone processes. [Learn more about Altair® Monarch®.](#)

Data Visualization and Streaming Analytics

Perform visual analysis of real-time, time series, and historic data at nanosecond refresh rates. Build pre- and post-trade analytics, anomaly detection, and profitability dashboards. Create actionable, interactive business intelligence dashboards to display KPIs and other important metrics without writing a line of code. [Learn more about Altair® Panopticon™.](#)