



# Elysium InfiPoints®

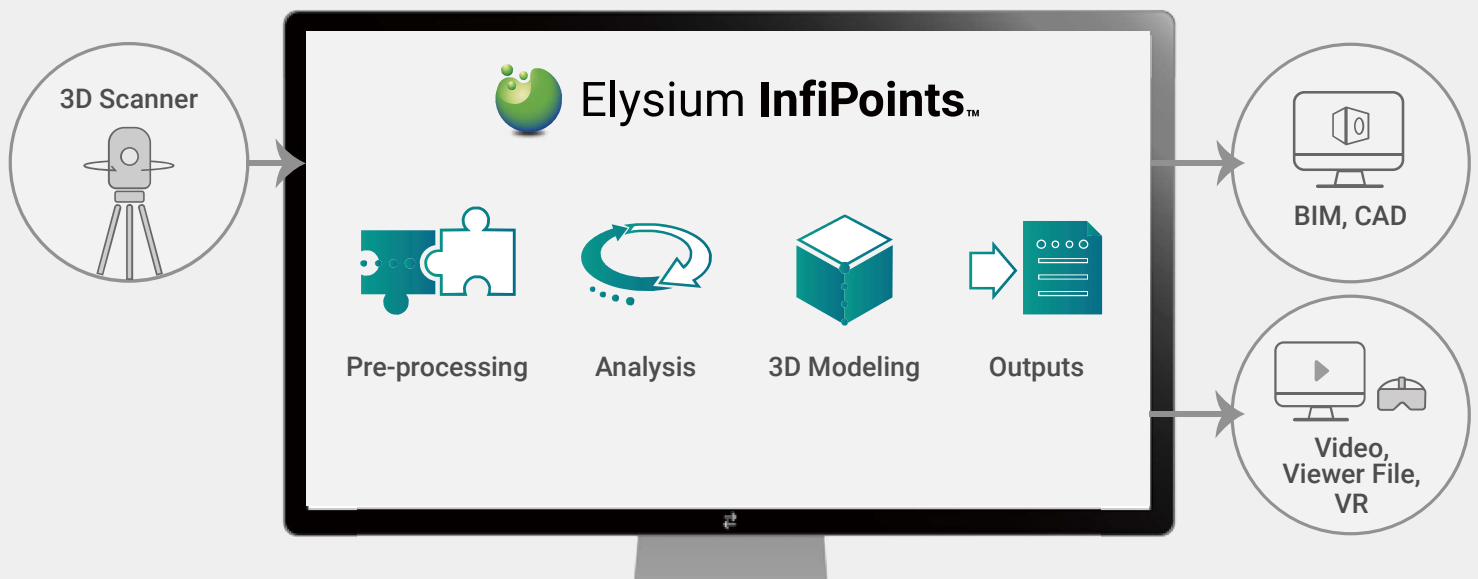
Empower Engineering with Infinite Point Clouds



## Accelerating the Use of Point Clouds

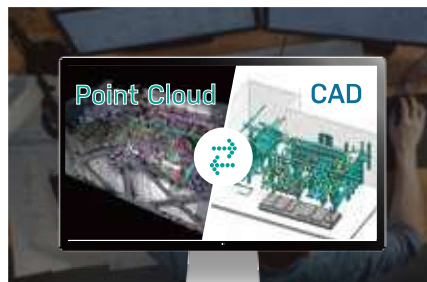
Point cloud data is the future of 3D capture technology, and the future is now. InfiPoints brings you a new approach to processing, optimizing and sharing 3D Data.

### All-encompassing Point Cloud Processing Software



#### Solid Performance

Stress-free handling of billions of points of your scanned data such as that of large buildings, plants and construction sites.



#### Rapid CAD Modeling

Trouble-free modeling of pipes and steel structure. Deliver models to Revit or other CAD software.



#### Shared Experience

With anyone and from anywhere. InfiPoints offers Point Cloud VR, and viewer files.

### Highlighted Feature

## POINT CLOUD TO CAD

No need to model pipes, ducts, steel structures and equipment from scratch any more. InfiPoints provides state-of-the-art automatic feature extraction of planes, pipes, ducts and steel structures.

## Functionality

### Data Import



[Supported format]

FLS/FWS, ZFS/ZFPRJ, PTX, CL3, E57, PTS, LAS, TXT, DP, VRML, STL, OBJ, IGES, STEP, DWG, DXF, ENF, CATIA V5, CATIA V4, NX, Creo Parametric, JT, Parasolid, ACIS (SAT)

### Data Pre-processing



Automatic Registration

Noise Reduction

Feature Extraction

Point Cloud Optimizing

### Analysis & Simulation



Measurement

Collision Detection

Verification against CAD Model

### 3D Modeling



Pipe Modeling, Steel Structure Modeling, Equipment Modeling, Duct Modeling

Polygon Generation

### Advanced Outputs



VR Export

CAD Export

Visualization File Export

Video Creation

Ortho Image Export





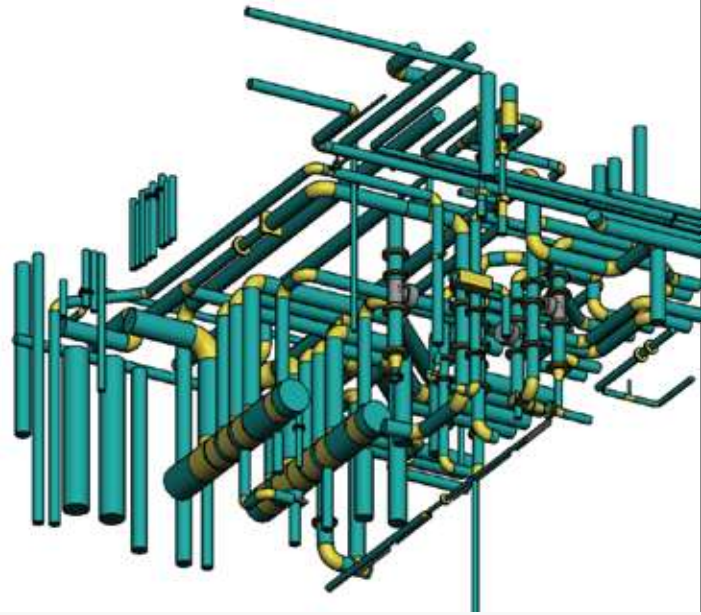
# Elysium InfiPoints™

Revit Option

ELYSIUM

## Streamlining 3D Modeling for BIM

Models extracted from InfiPoints can be directly imported into Revit, Autodesk's BIM software. This will allow you to considerably reduce the time spent on modeling.



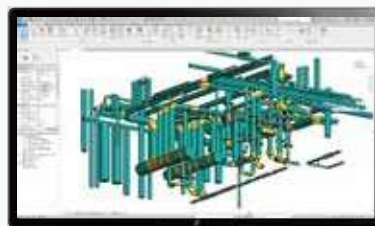
## From InfiPoints to Revit

No need to model from scratch any more



### Automatic Extraction

Create CAD models by automatically extracting cylinders and planes from point clouds



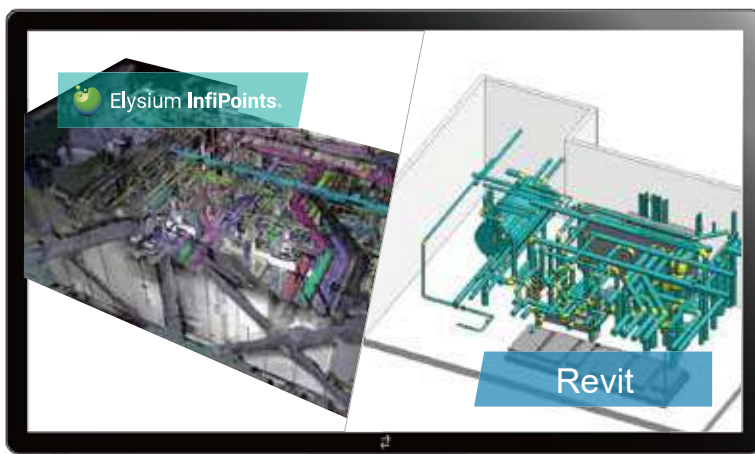
### Data Import

Drag-and-drop the file and open your extracted model in Revit. Start modeling in no time



### Detailed Modeling

Detailed modeling within Revit



## What you can import into Revit...

\*Revit 2021, 2022 are supported.

- Pipe
- Duct
- Steel Structure
- Plane







Elysium **InfiPoints™**

VR Option

 **ELYSIUM**

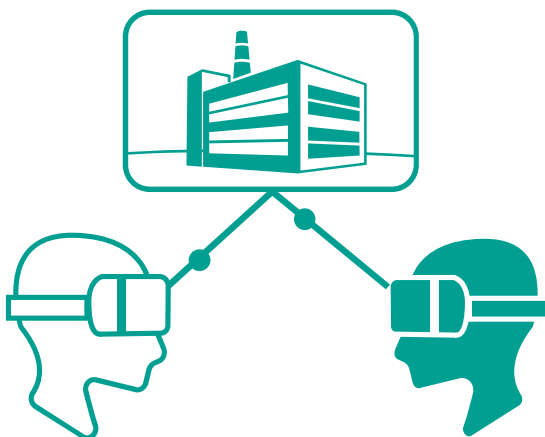
Experience and Share...

**Point  
Cloud** × **VR**



Supports Oculus, VIVE  
and Valve

Experience VR of your 3D laser scanned point cloud  
through a head-mount display.



From Anywhere...

Share your point cloud data with others.  
Enter the 3D space from anywhere and examine  
the data with your colleagues located remotely.  
No need to gather at one place anymore.

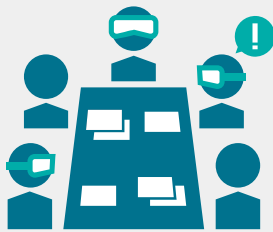
# What's More with the VR Option?

Standard VR functions are included with InfiPoints Standard, and you can experience more by purchasing the VR Option.

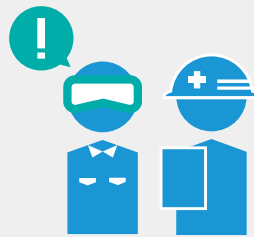
(\*1): Requires no licensing nor installation of InfiPoints to view the exported file.  
 (\*2): Edits will be saved in the project file and be editable in InfiPoints, too.

Basic	View operation
	Distance measurement
	Laser pointer
	Jump to the specified location
	Virtual inspection
	Display 3D notes created in InfiPoints
Optional	Display 3D CAD models
	Viewer file export (*1)
	Multi-user virtual inspection
	Synchronize the view point between multiple clients
	Add dimensions
	Add comments and bookmarks (*2)

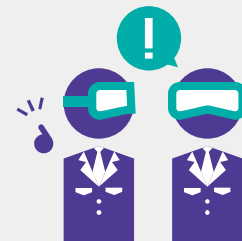
## Utilizing Scenes



Meetings and Presentations



Safety Education



Business Discussion

## Supported Hardware



Oculus Rift S  
Oculus Quest 2



VIVE Pro, VIVE Pro 2,  
VIVE Cosmos, VIVE Cosmos Elite



Valve Index

*A PC that meets both InfiPoints and VR hardware specification is required.  
 Refer to the Elysium and VR hardware website for more information.*

