

FIELDVIEW

FIELDVIEW EXPRESS TOP USE CASES

Altair Partner Alliance

Large Datasets

Challenge

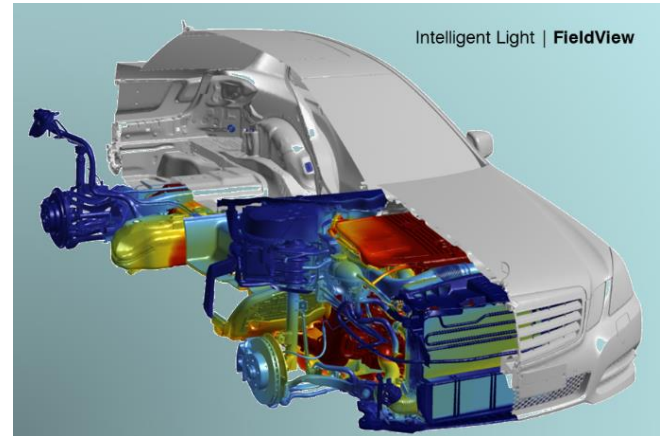
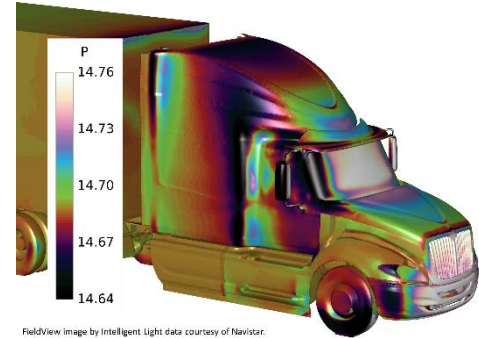
- Data is too large (large grid, large number of times steps) for built-in post of commercial solver.

Solution

- FV Express can handle larger datasets and unsteady data faster with high-performance file reading, a low memory footprint and high speed graphics.

Result

- Removes limits on case size, allows for greater fidelity
- Allows for greater fidelity
- Reduces turnaround time
- Use of more solver cycles



Dataset Comparison / Surface Sampling

Challenge

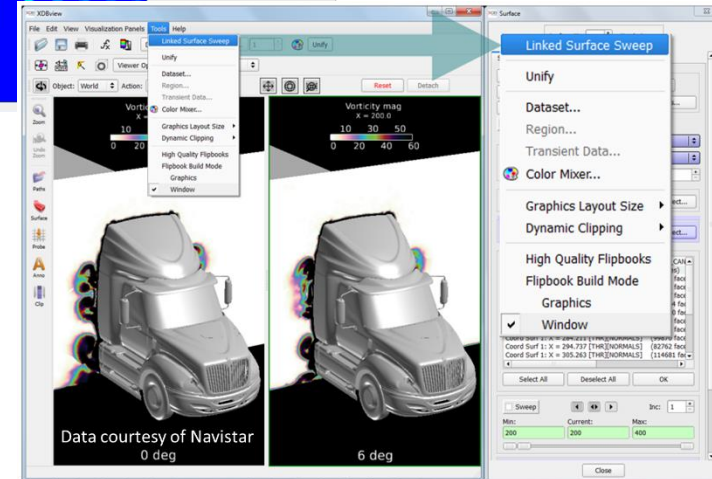
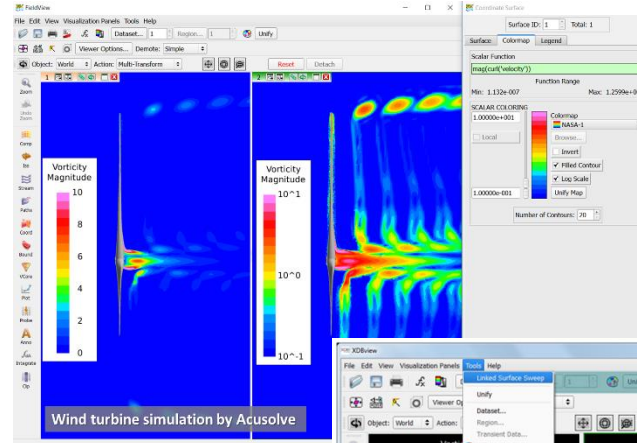
- How do you compare apples and oranges? Sampling is required to gather information from dissimilar cases. This is time consuming on full CFD volume.

Solution

- FV Express surface sampling is many times faster and can be done on surfaces that don't match.

Result

- Highlight areas of difference between base case and revisions, or different methods, grid types, solver codes.



Unsteady Simulation

Challenge

- Unsteady simulation is more accurate but can create many more large files
- Copying and readying files can be a corporate bottleneck

Solution

- FieldView Express delivers XDB workflows so that data size can be reduced 100-1000x.

Result

- True interactive post-processing of ICE designs and other unsteady results.

