

ALTAIR ONE® CLOUD INNOVATION GATEWAY

Altair One® is a revolutionary cloud innovation gateway for collaborative engineering, data engineering, and analytical application development. Built on a robust high-performance computing (HPC) backbone and decades of simulation, HPC, and artificial intelligence (AI) expertise, Altair One provides access to your tools, data, and computing resources while unleashing the power of AI across every step of the product development life cycle.

Seamless Access

Gain seamless access to powerful engineering and data analytics software via desktop or browser. Integrate streamlined application development and deployment, manage complex workflows, visualize data with user-friendly dashboards, and drive engineering advancements from any location, leveraging flexible and scalable cloud infrastructure.

Manage Data Across the Product Life Cycle

Maintain data continuity and experience a seamless flow of digital information throughout every step of the product development lifecycle. Consolidate your team's collective expertise including simulation data, metadata, data libraries, and more in a centralized repository. Utilize stored information and access cloud-native applications, exclusively in Altair One, to drive innovation.

Powerful HPC Backbone

Manage cloud and on-premises resources with one view into your entire computing infrastructure. Analyze, budget, and make informed decisions for the future. Support large-scale projects and growing teams with flexible, scalable cloud-based resources and the latest CPU and GPU technology.

Gateway to a Digital Enterprise

One source of truth: Altair One makes true digital engineering possible. Break down data silos between engineers, access and manage scalable compute resources, and digitize engineering processes, all through a single pane of glass.

One total twin: From requirements and product design to in-service optimization, Altair One provides one comprehensive, open digital twin architecture. Embedded AI technology bridges multidisciplinary system simulation with real-world data to accelerate design exploration, product development, and manufacturing. End-to-end AI and Internet of Things (IoT) tools reduce waste, minimize downtime, and enhance productivity.



On average, we have reduced computational time by 50% with Altair One. It was a smooth process to transition to using Altair software, and easy to implement. The team at Altair have been very helpful and attentive.

Oscar Vila, head of project management, Otis Elevator

To Learn More:
altair.com/altair-one



One traceable thread: Integrate requirements, simulation, testing, and operational data in one environment. Break down data silos between engineers and engineering teams; formalize the development, integration, and use of models for informed decision-making; connect digital models; and maintain one traceable thread across the entire product development life cycle. Altair One is your gateway to secure, centralized simulation process and data management.

For Engineers

Experience the convenience of an all-in-one platform with comprehensive simulation workflows, automated metadata collection, and collaborative tools to speed up engineering processes. Add instant access to powerful compute resources for faster results from anywhere.

For Data Scientists

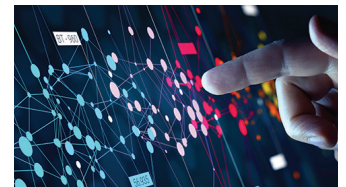
Get instant access to your data analytics tools and on-demand hardware resources anytime, anywhere, in a dynamic, collaborative environment that accelerates innovation. Run large AI/machine learning workloads and access the GPU resources you need to quickly run large language models.

For IT Administrators

Give your engineering and data analytics teams seamless access to the tools and computing resources they need to succeed while minimizing your IT support burden. Efficiently manage software licenses and oversee cloud and on-premises resources through a secure, unified environment.

For Executives

Maximize workforce productivity by enabling seamless collaboration among remote teams. Stay ahead of competitors by leveraging the latest software and hardware for timely innovation. Remain flexible with a scalable environment designed to connect people, technologies, and data.



Altair One provides access to your tools, data, and computing resources while unleashing the power of AI across every step of the product development life cycle.

Altair One is your cloud innovation gateway for collaborative engineering, data engineering, and analytical application development.