



HYPERWORKS X HIGHLIGHTS



# OUR BROADENING SCOPE

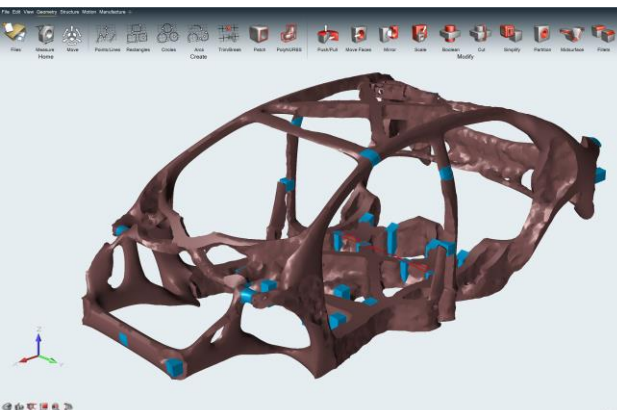


# INTERCONNECTED SYSTEMS



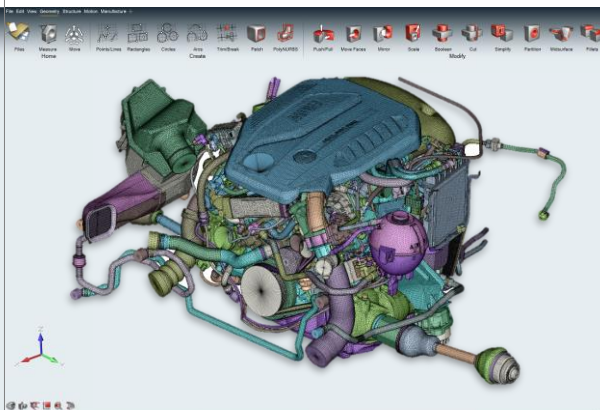
# COMMON ENVIRONMENT UNITING DESIGN/ENGINEERING COMMUNITY

## Inspire



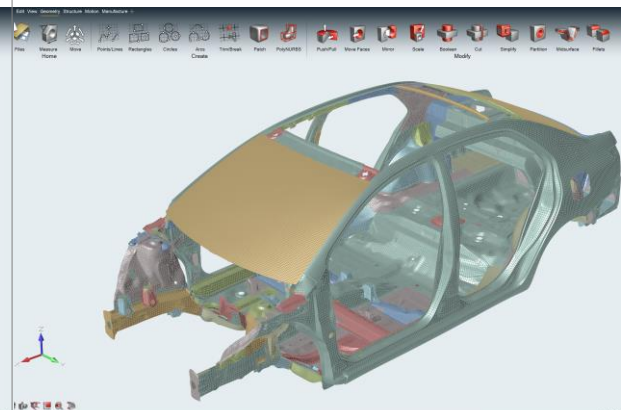
Ideation and Manufacturing Simulation

## SimLab



Complex Solid Assemblies and Multiphysics

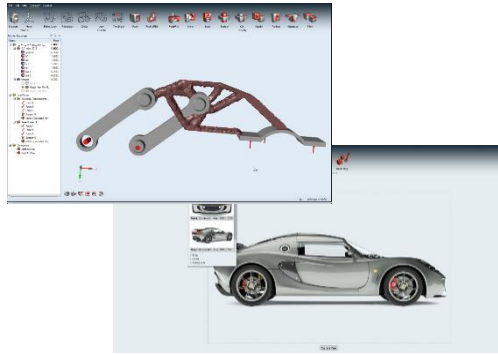
## HyperMesh



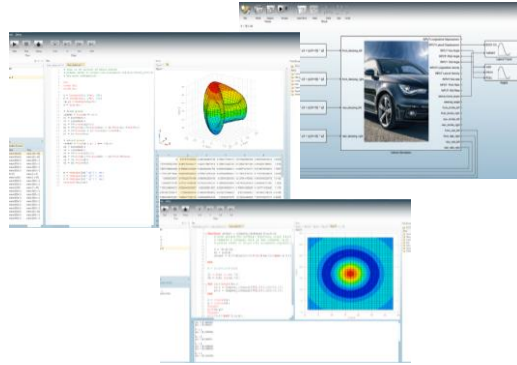
Complex Shell Model Assemblies



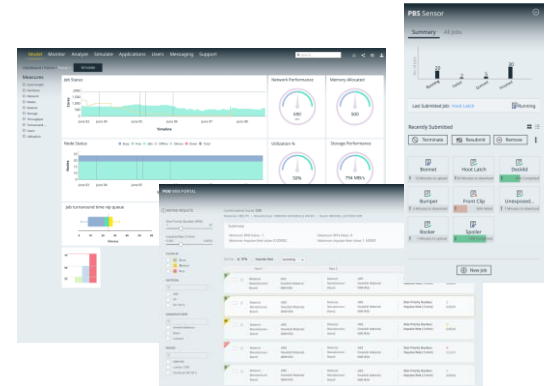
# SOLIDTHINKING



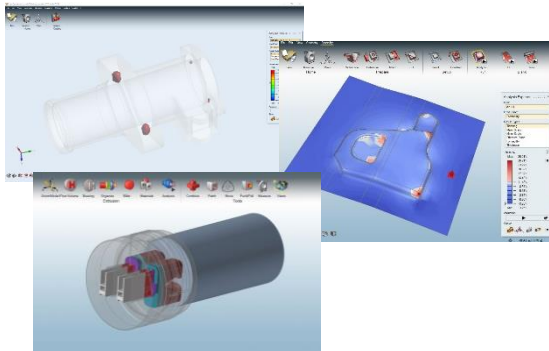
# SYSTEMS



# PBS



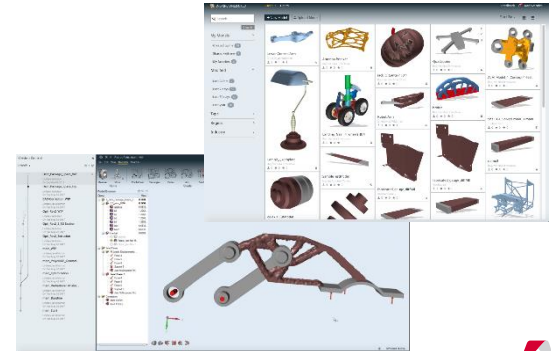
# MANUFACTURING



# SMARTWORKS



# UNLIMITED



# HYPERWORKSX FOCUS



## ROBUSTNESS

Model and analyze  
hiccups-free, error-free



## EFFICIENCY

Find the most efficient path  
with process-driven workflows



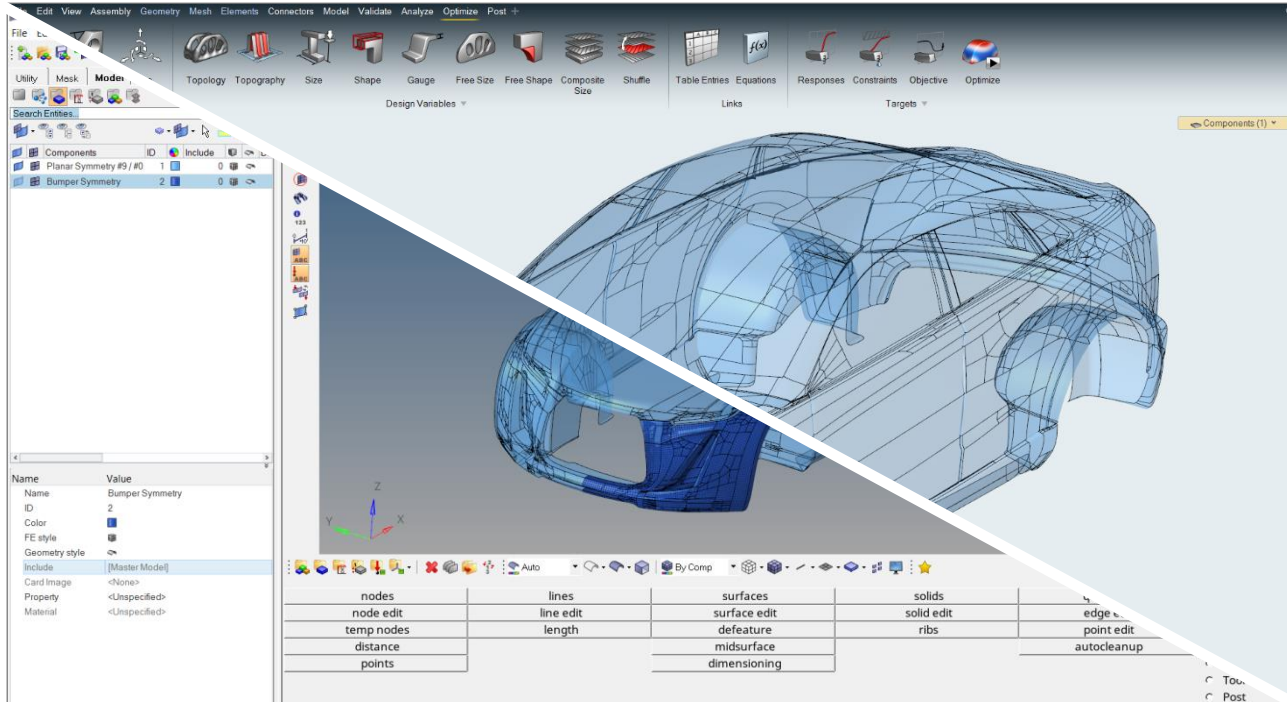
## PERFORMANCE

Leverage all the power of  
your hardware resources



# GRACEFUL TRANSITION TO NEW USER EXPERIENCE

All models, scripts, processes continue to work - Same HM file, Same DB



# GETTING AROUND HYPERWORKS X





# GETTING AROUND HYPERWORKS X

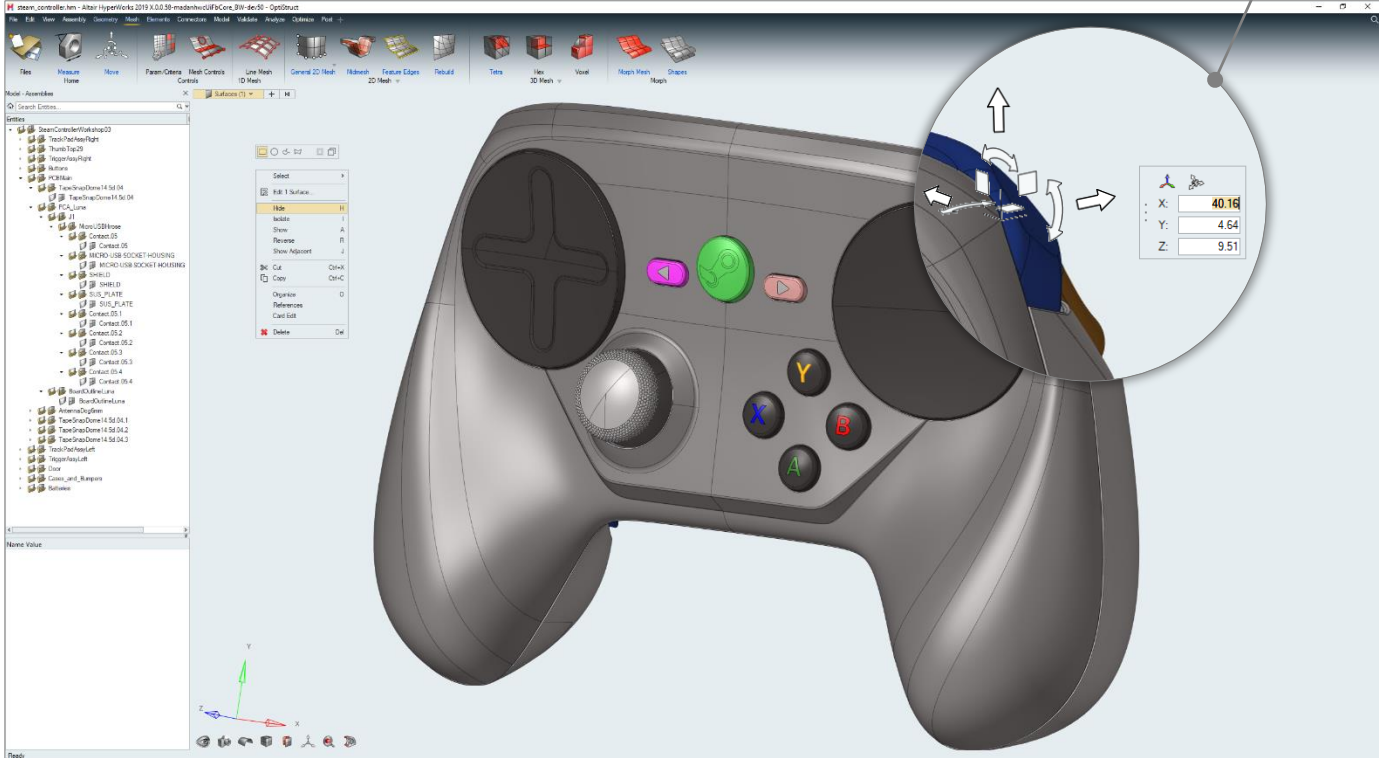


# GETTING AROUND HYPERWORKS X



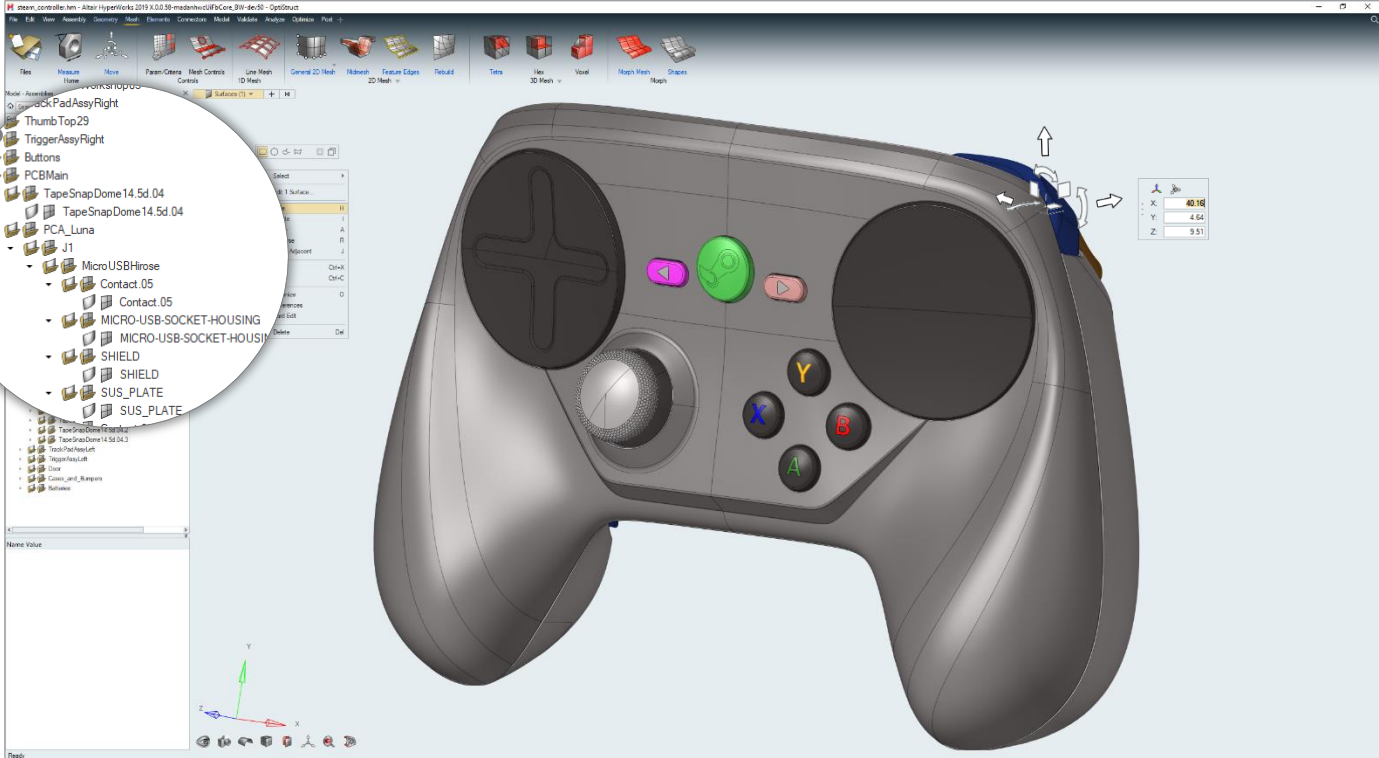
# GETTING AROUND HYPERWORKS X

Graphical Manipulation

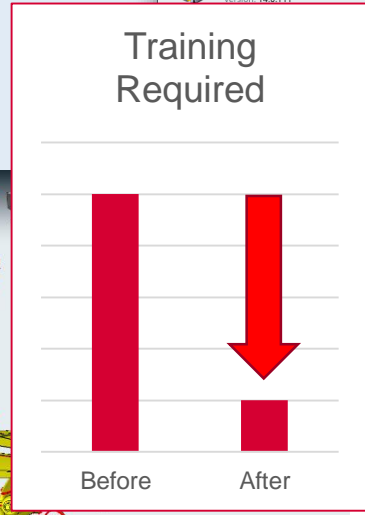
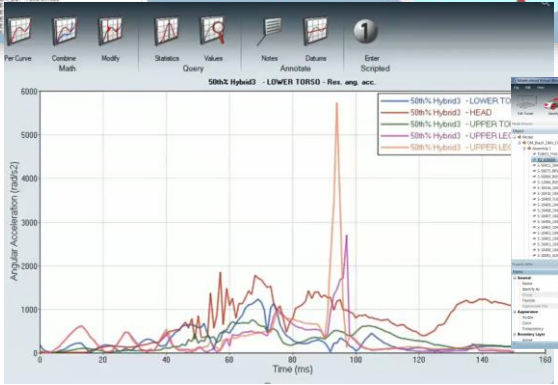
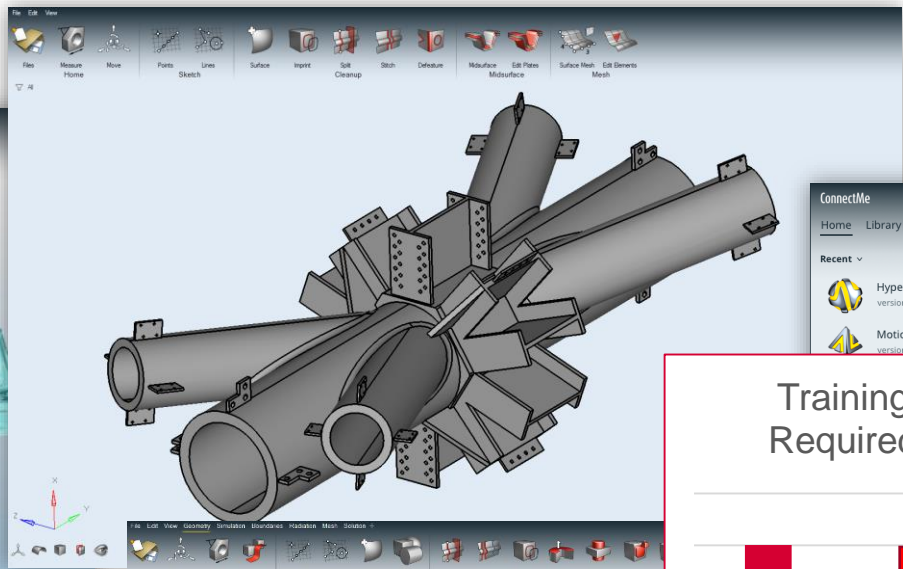
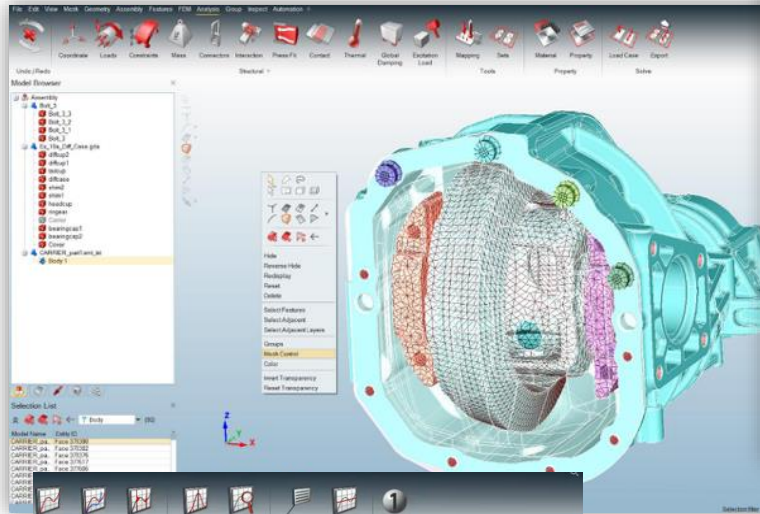


# GETTING AROUND HYPERWORKS X

Model Browser

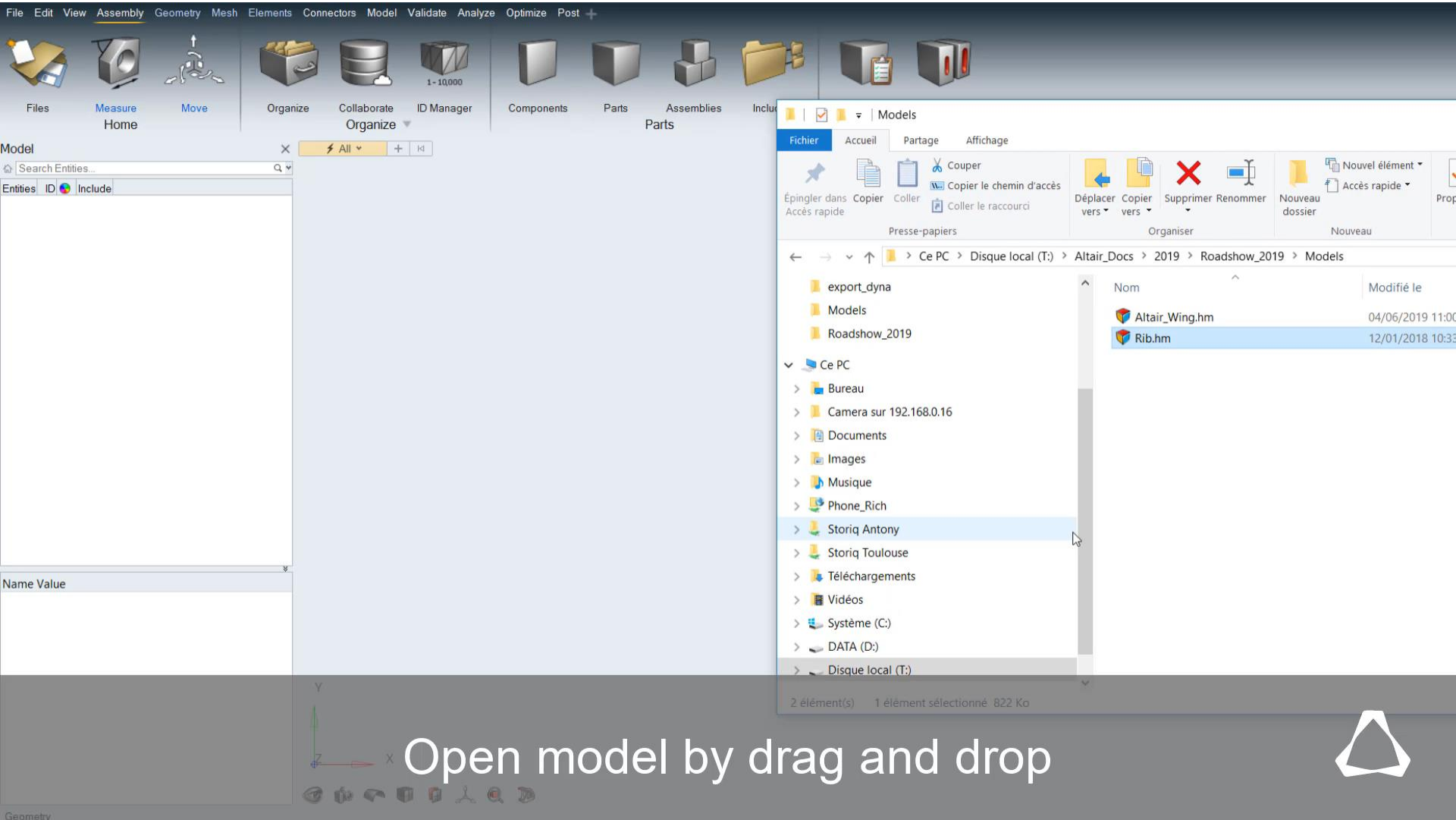


# HYPERWORKS



# HWX 2019





Model x All +

Search Entities...

Entities ID Include



Name Value



File Explorer window showing the path: Ce PC > Disque local (T:) > Altair\_Docs > 2019 > Roadshow\_2019 > Models

Nom	Modifié le
Altair_Wing.hm	04/06/2019 11:00
Rib.hm	12/01/2018 10:33

2 élément(s) 1 élément sélectionné 822 Ko

Open model by drag and drop





Solver

Entities

- General-Collectors (263)
- Include Files (5)

Name Value

Model Solver Mask



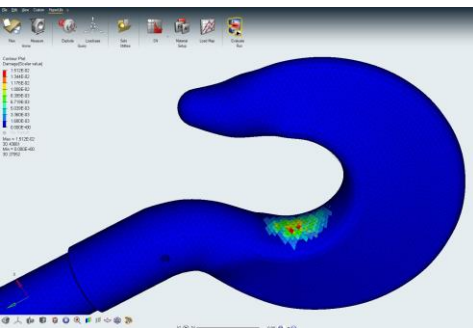
Define working plane via rectangle





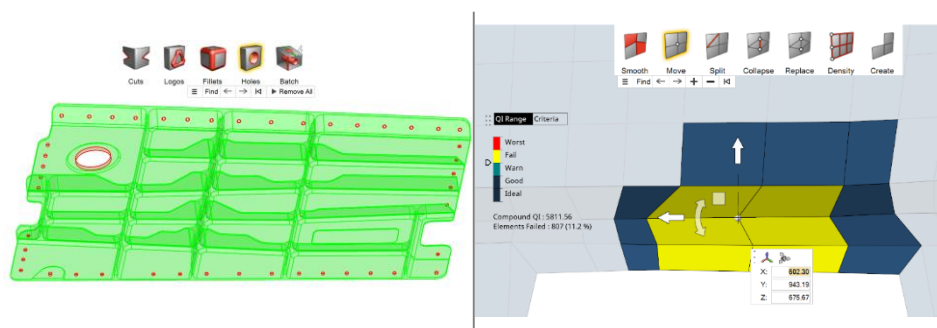
# HYPERWORKS 2019 X - TARGETED WORKFLOWS

## Fatigue



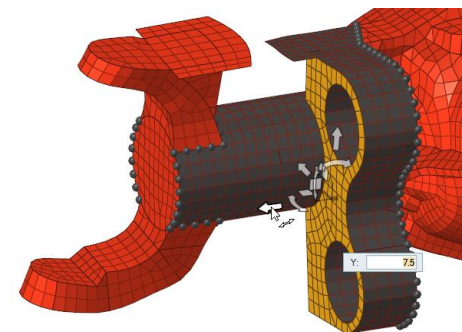
Easy-to-learn solution for fatigue life prediction on a solver-neutral framework

## Geometry & Meshing



Decrease model build time with efficient workflows including: geometry creation and editing, mid-surface extraction, surface meshing and midmeshing, mesh quality correction

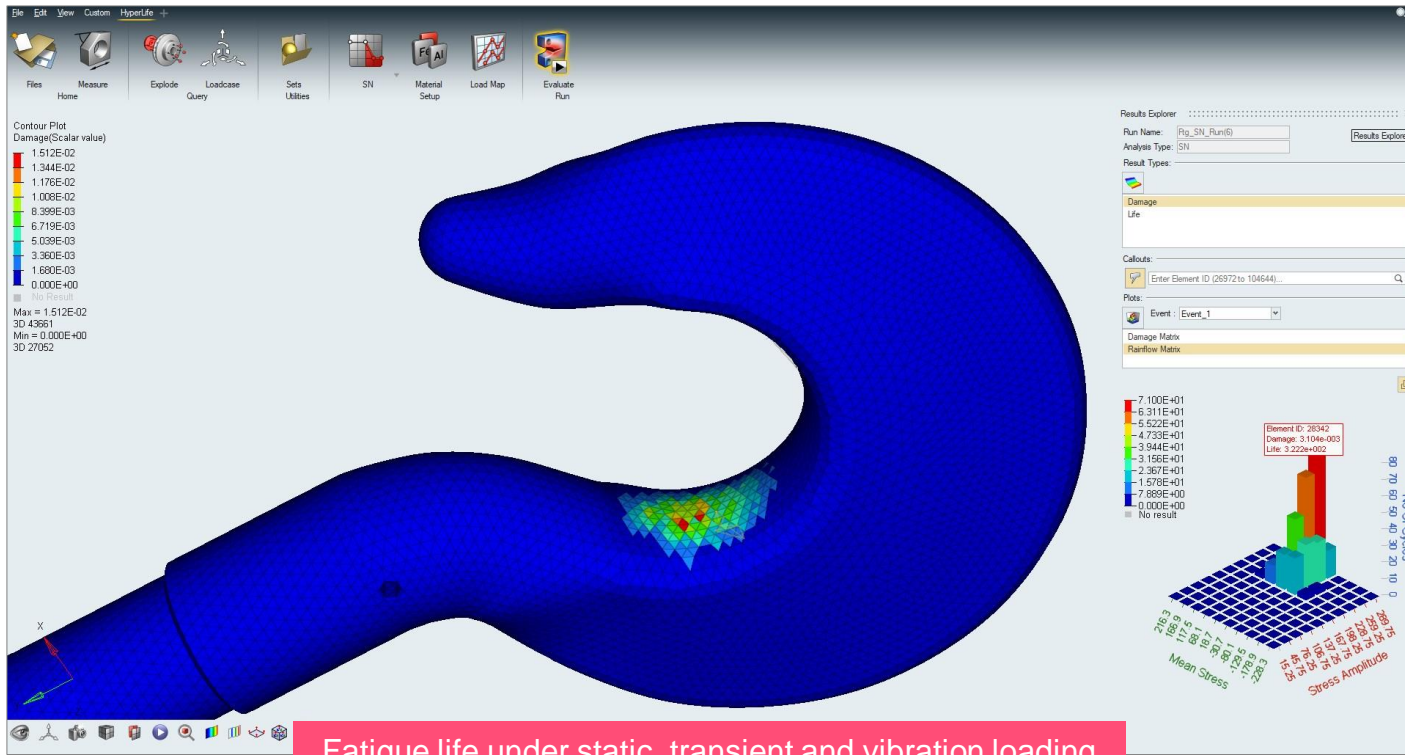
## Morphing



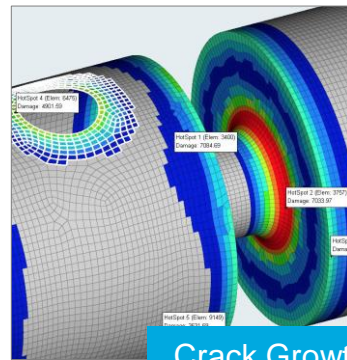
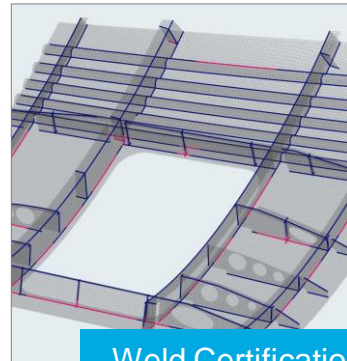
Morphing is no longer an expert-level tool. Click and morph directly on your model



# ALTAIR HYPERLIFE – FATIGUE AND DURABILITY PLATFORM



Fatigue life under static, transient and vibration loading



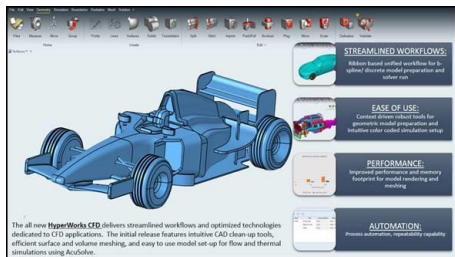


Typical workflow for Stress Life (SN) analysis



# HYPERWORKS 2019.1 X - TARGETED WORKFLOWS

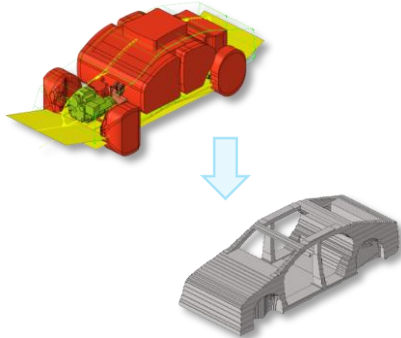
## CFD



Easy-to-learn solution for CFD workflows

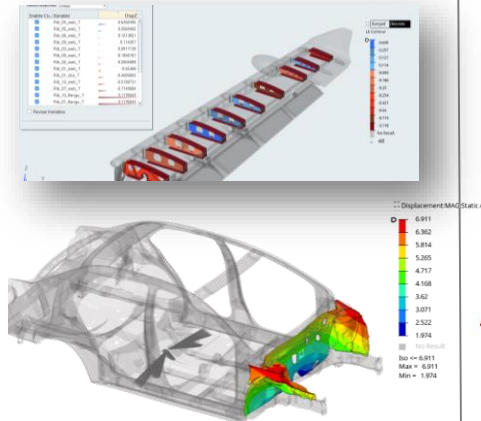
## Optimization Workflows

### Conceptual

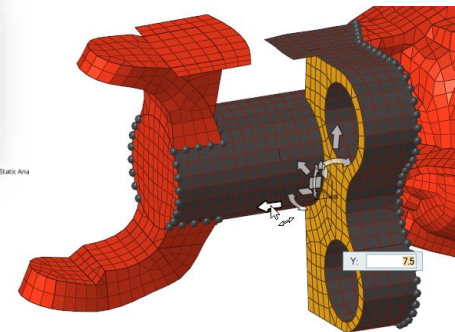


Optimize your problem from beginning to end of the design cycle

### Size & Shape

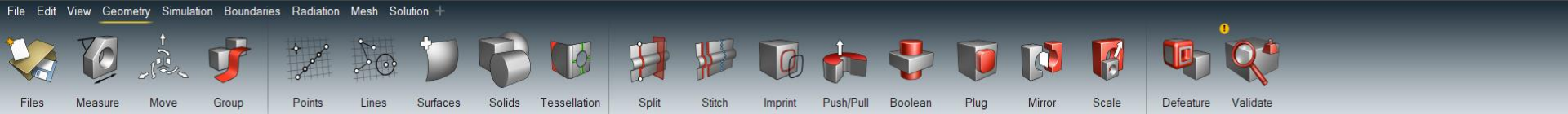


## GPU Enabled Morphing

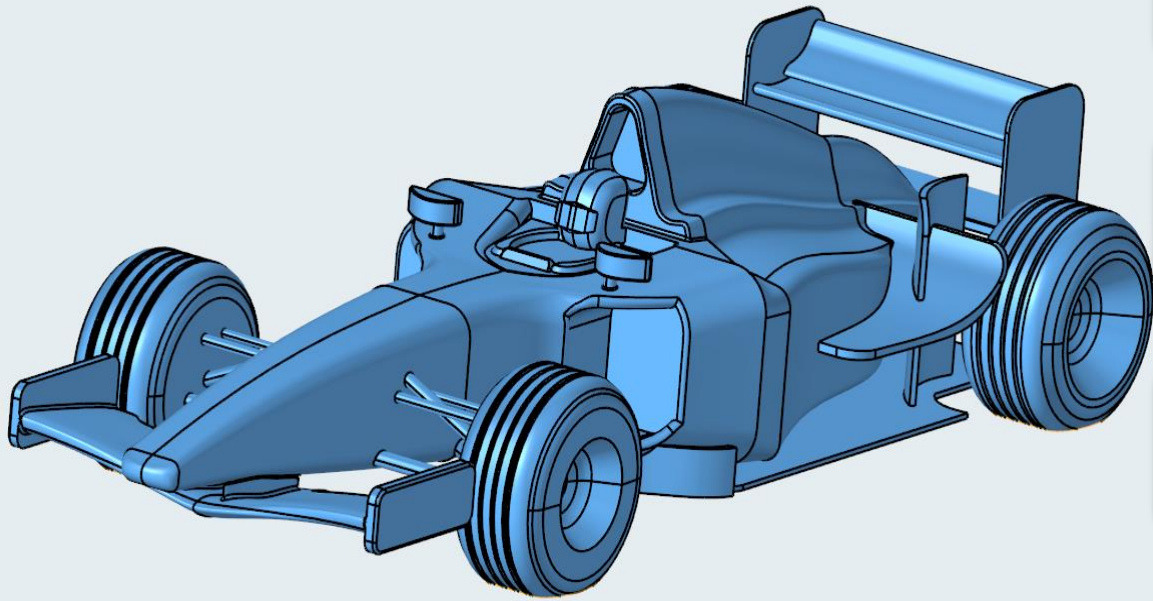


Potentially 10X Faster!





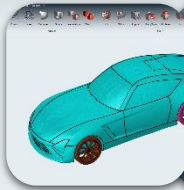
Surfaces ▾ + Home Create Edit ▾



# HYPERWORKS – CFD

## STREAMLINED WORKFLOWS:

Ribbon based unified workflow for b-spline/ discrete model preparation and solver run



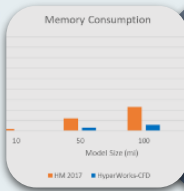
## EASE OF USE:

Context driven robust tools for geometric model preparation and intuitive color coded simulation setup



## PERFORMANCE:

Improved performance and memory footprint for model rendering and meshing



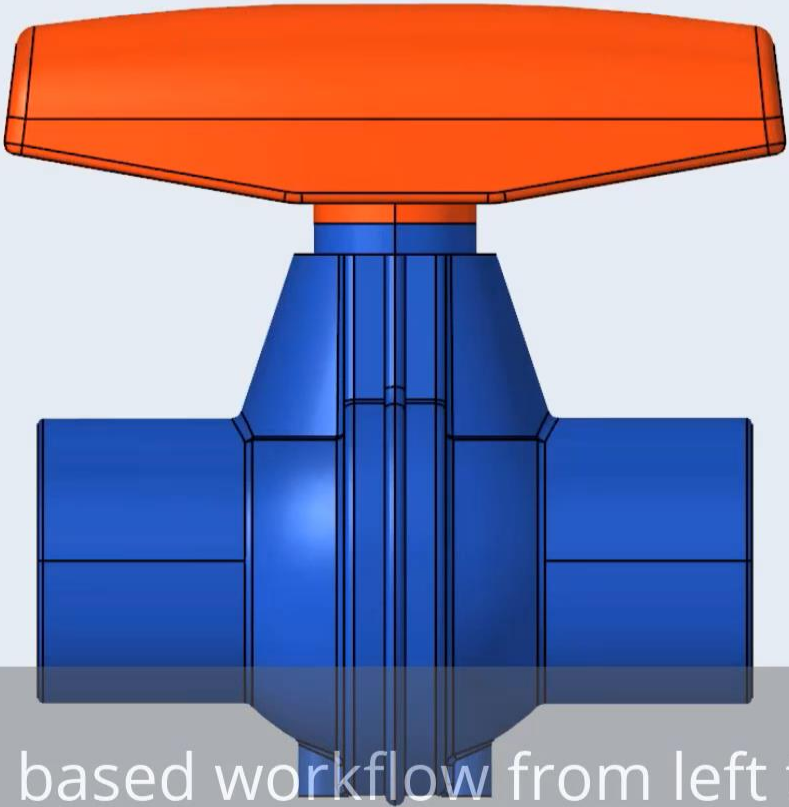
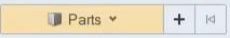
## AUTOMATION:

Process automation, repeatability capability with template manager

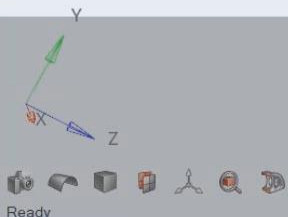
Name	Type	Group selection	Mass
Moving wall	None	Alter_Ta	
Mass flow rate	None	Alter_Ta	
Outlet	None	Alter_Ta	



Home

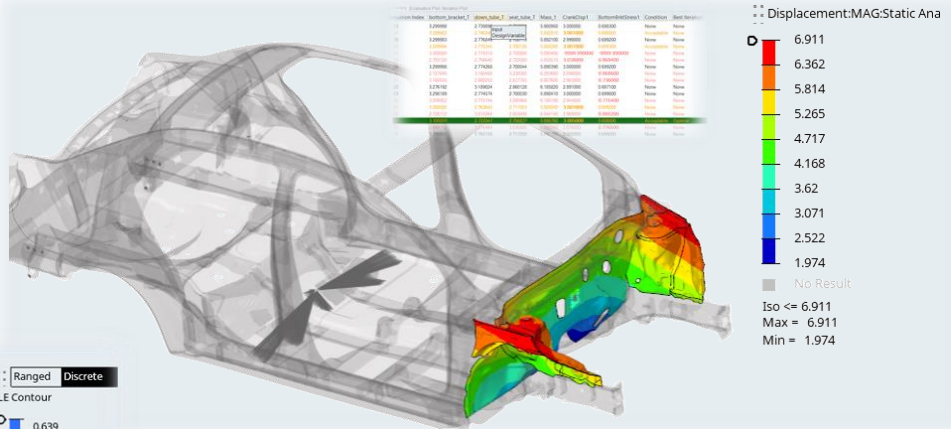
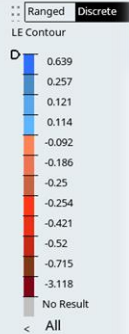
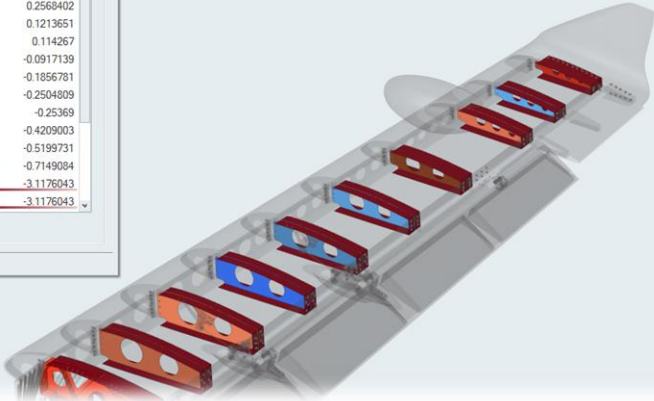


Ribbon based workflow from left to right



Enable Co... Variable	DispZ
<input checked="" type="checkbox"/>	Rib_04_web_T 0.6392485
<input checked="" type="checkbox"/>	Rib_05_web_T 0.2568402
<input checked="" type="checkbox"/>	Rib_06_web_T 0.1213651
<input checked="" type="checkbox"/>	Rib_09_web_T 0.114267
<input checked="" type="checkbox"/>	Rib_03_web_T -0.0917139
<input checked="" type="checkbox"/>	Rib_08_web_T -0.1856781
<input checked="" type="checkbox"/>	Rib_02_web_T -0.2504009
<input checked="" type="checkbox"/>	Rib_01_web_T -0.25369
<input checked="" type="checkbox"/>	Rib_01_ribs_T -0.4209003
<input checked="" type="checkbox"/>	Rib_10_web_T -0.5199731
<input checked="" type="checkbox"/>	Rib_07_web_T -0.7149084
<input checked="" type="checkbox"/>	Rib_10_flange_T -3.1176043
<input checked="" type="checkbox"/>	Rib_01_flange_T -3.1176043

Review Variables



# HYPERWORKS X DESIGN EXPLORATION

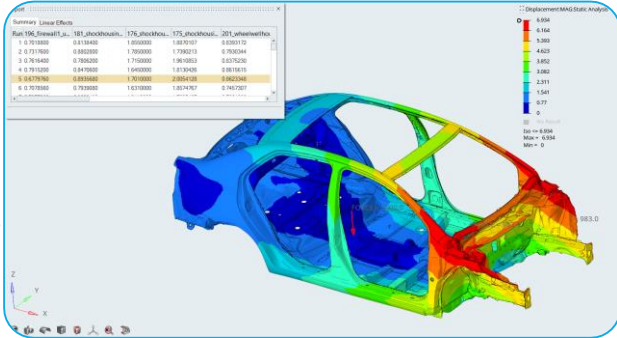
HyperWorks 2019.1



# DESIGN INSIGHT

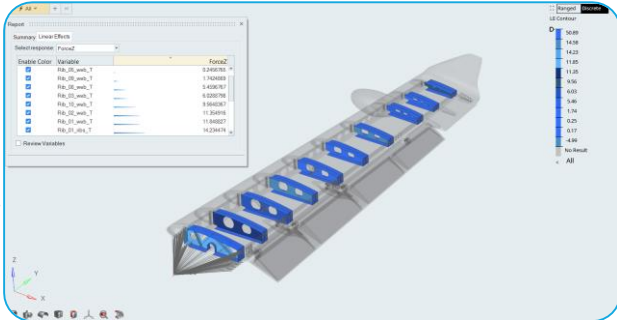
- Review, plot, and compare results from multiple runs

**Solver Results Table & Visualization**  
Load results for any exploration run



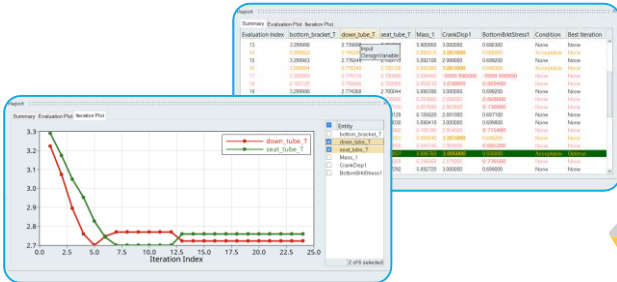
- Discover which attributes contribute most to behavior

**Linear Effects Plot & Visualization**  
Input sensitivities mapped on model

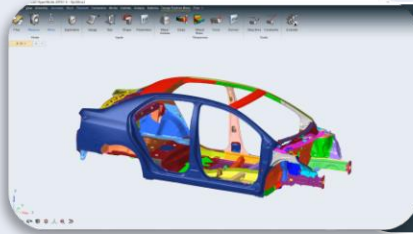


- Find optimal designs

**Optimization Tables & Plots**  
Integrated post-processing

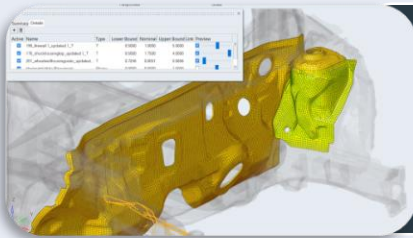






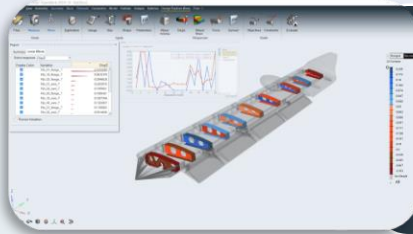
### End-to-End Workflow

Ribbon-based workflow captures everything from input & response definition, to multi-run execution, to post-processing and results interpretation



### Ease of Use

Interaction with model graphics makes design variable creation and response definition interactive



### Insight

- Learn which attributes contribute most to behavior
- Review, plot, and compare results from multiple runs
- Find optimal designs

The brand new **HyperWorks Design Explorer** provides a complete end-to-end workflow for multi-run simulations, including designs-of-experiments and optimizations. The workflow includes set-up, evaluation, and – most importantly – insightful interpretation of results, in an easy-to-use, intuitive environment, tightly integrated into the pre-processing environment.

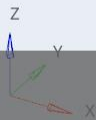
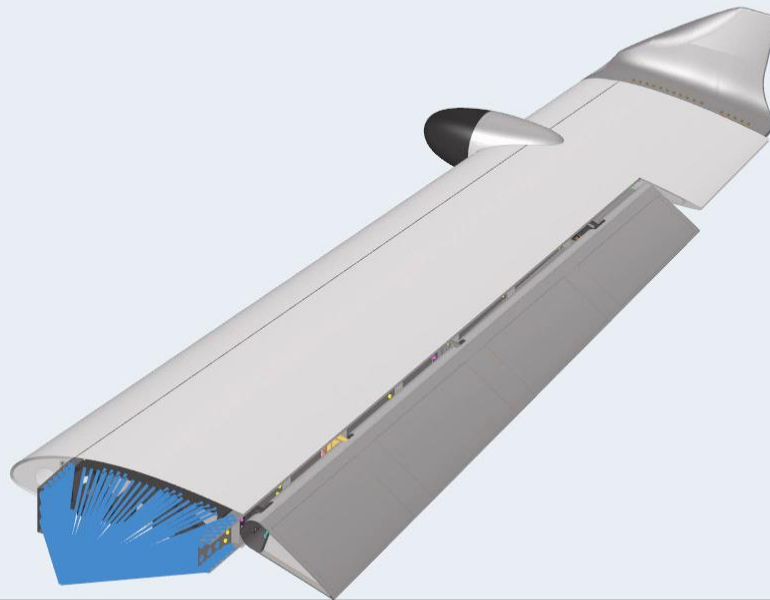


Model

All + H

Entities	ID	Include
Rear_Rib_10	81	0
Rib_02	82	0
Rib_03	83	0
Rib_04	84	0
Rib_05	85	0
Rib_06	86	0
Rib_07	87	0
Rib_09	89	0
Rib_10	90	0
Rear_Rib_08	91	0
Rear_Rib_09	92	0
Rib_08	93	0
Rib_01	94	0
Front_Beam	96	0
Upper_Panel	97	0
Lower_Panel	98	0
Rib_Heads_01	99	0
Rib_Heads_07	100	0
Rib_Heads_04	101	0
Rib_Heads_10	102	0

Name Value



First, isolate ribs, whose thicknesses will become design variables



# HWX 2019 MORPHING



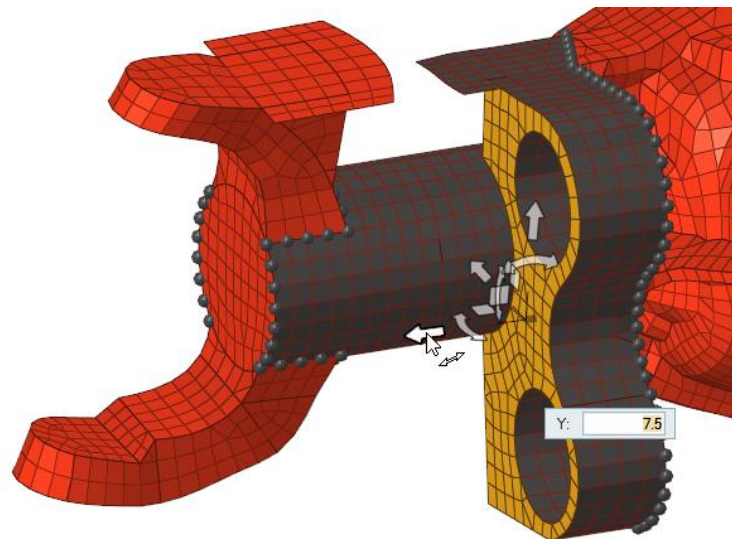
# MORPHING TOOLS: NEW USER EXPERIENCE IN 2019X

**No panels, no setup. Click and morph directly on your model.**

**Great for:**

- **Concept Design.** Morph to modify designs.
- **Model Build.** Map an existing mesh to new geometry.
- **Analysis, DOE, Optimization.** Create and test design variants.

**Revert, save, and reapply morphs freely.**





Solver

All + H

Entities

- \*ELEMENT (37116)
- \*PART (15)
- \*SET (4)
- \*SECTION (34)
- \*DEFINE (21)
- \*MAT (7)
- \*AIRBAG (1)
- \*HOURGLASS (1)

Name Value



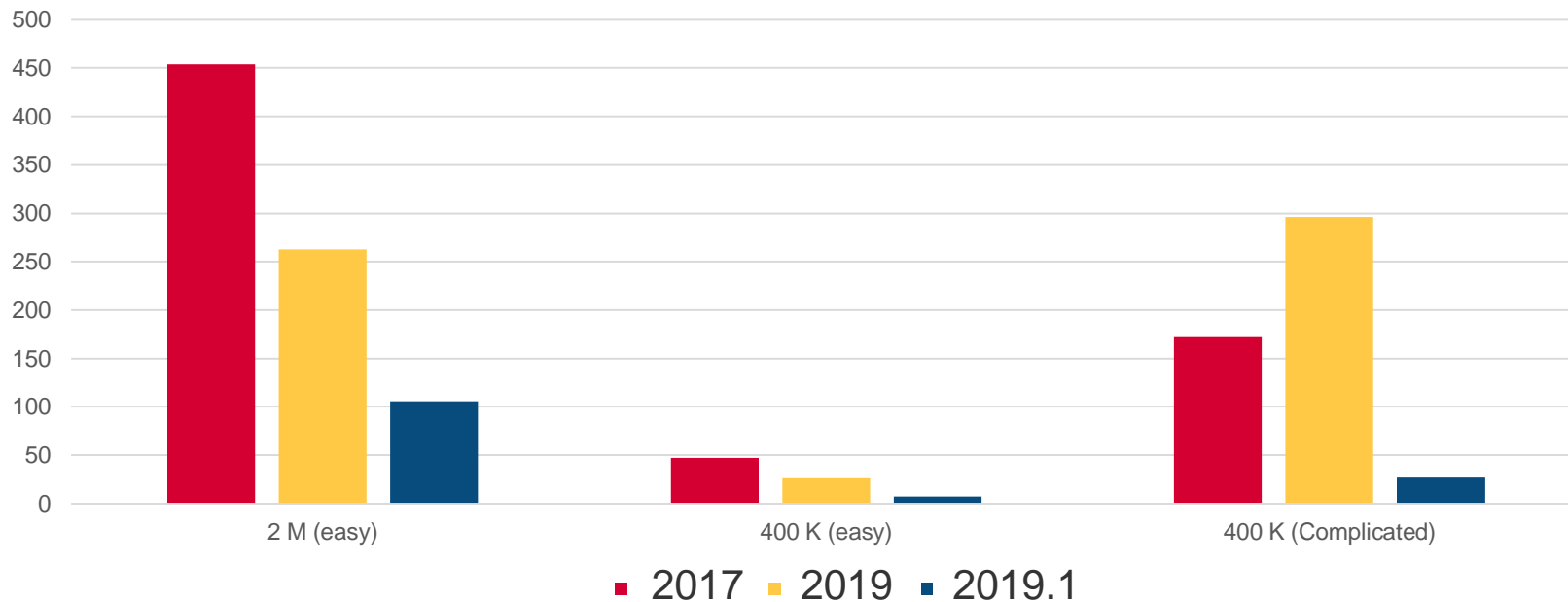
Remove Intersection Using Morph Mesh



# MORPHING PERFORMANCE!



Morph Algorithm Improvements and Parallel GPU usage



# HWX 2019.1 DESIGN SPACE MANAGEMENT FOR TOPOLOGY OPTIMIZATION

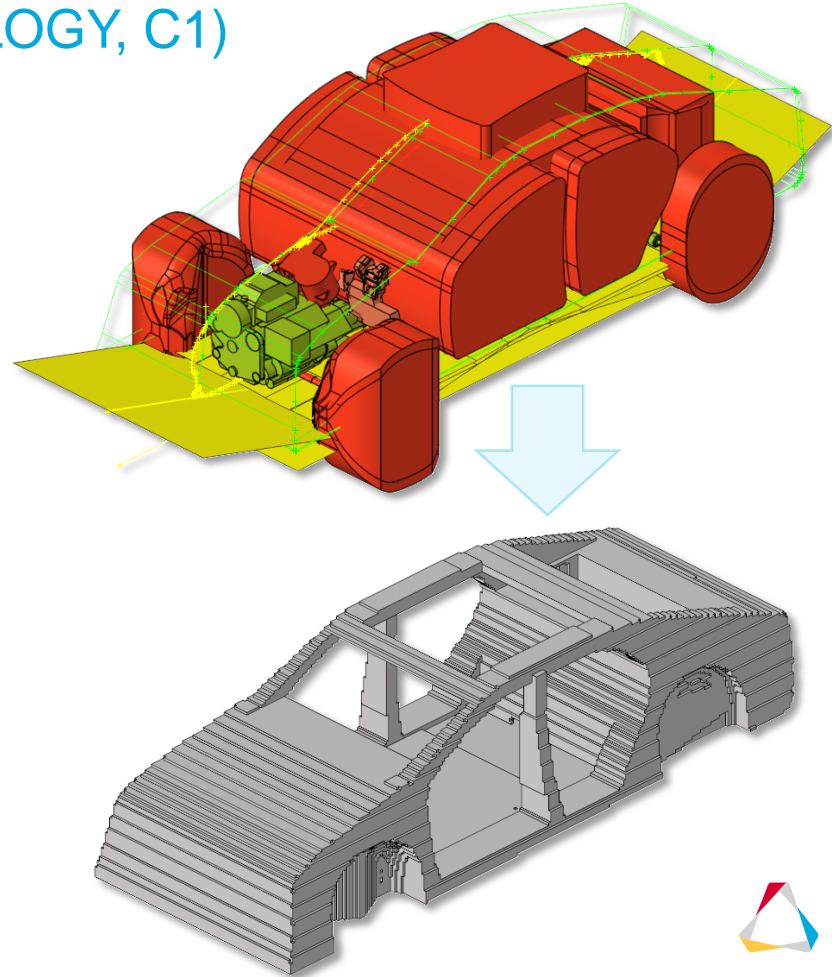


## DESIGN SPACE MANAGEMENT (TOPOLOGY, C1)

All new workflow to support the complete topology modeling and meshing process.

Process reduced from hours to minutes.

- New package space library
- New tools for managing package space
  - Collision detection
  - Package space (primitive) editing
- New voxel engine which supports..
  - Rapid creation (with boolean)
  - Design change edits – V6 to I4
  - Quickly generate new variants for multi-model optimization
  - Interactive design space editing





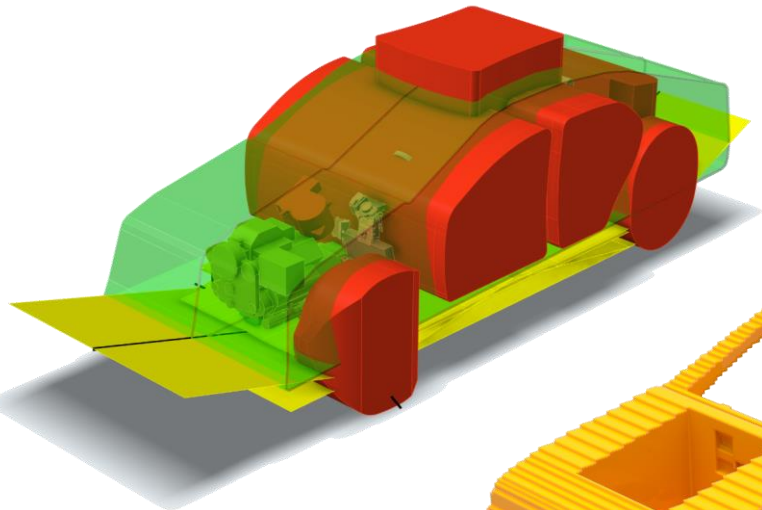
## CONCEPT DESIGN SPACE – CRADLE



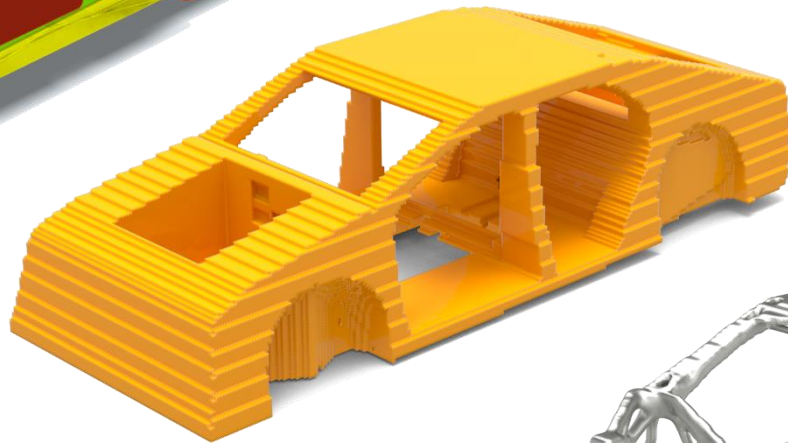
Design space created in less than 7 minutes



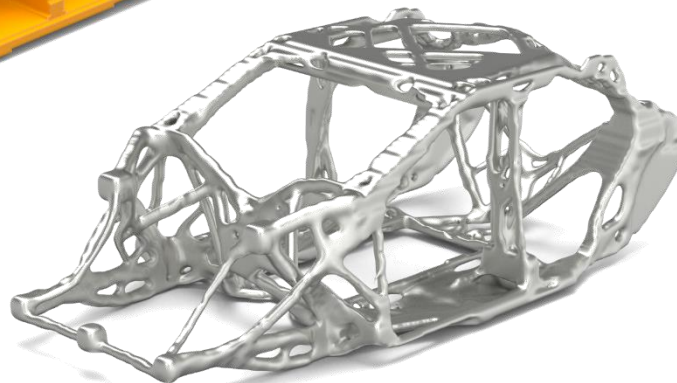
# VEHICLE ARCHITECTURE CONCEPT DESIGN



Design/non-design setup



Voxel design space



Optimization results



# Design Space Management for Topology Optimization in Altair HyperWorks X



# HWX 2019.1.1 SAFETY WORKFLOWS



# HWX 2019.1.1 - UNITY CRASH – OCCUPANT SAFETY

Elements Connectors Model Safety Validate Analyze



Dummy



Mechanism



Seat Belt



Seat Deformer

Occupant ▼



# DOCUMENTATION EXPERIENCE



## What's New

View new features for Altair HyperWorks 2019 X 2019.



## Get Started

Discover the workspace, licensing and installation, and training.



## Tutorials

Discover Altair HyperWorks 2019 X functionality with interactive tutorials.

## Categories

### File Management

Learn how to create, open, import and save models.

### View Controls

View controls enable you to control the view and display of your model in the modeling window.

### Find and Search

Quickly search for entities in your model, tools, panels, and help topics, as well as create entities and solver cards.

### Selection

Select and deselect entities to modify with other Altair HyperWorks 2019 X tools. Selected entities are outlined to indicate their selection state.

THANK YOU

